



# Other Highlights

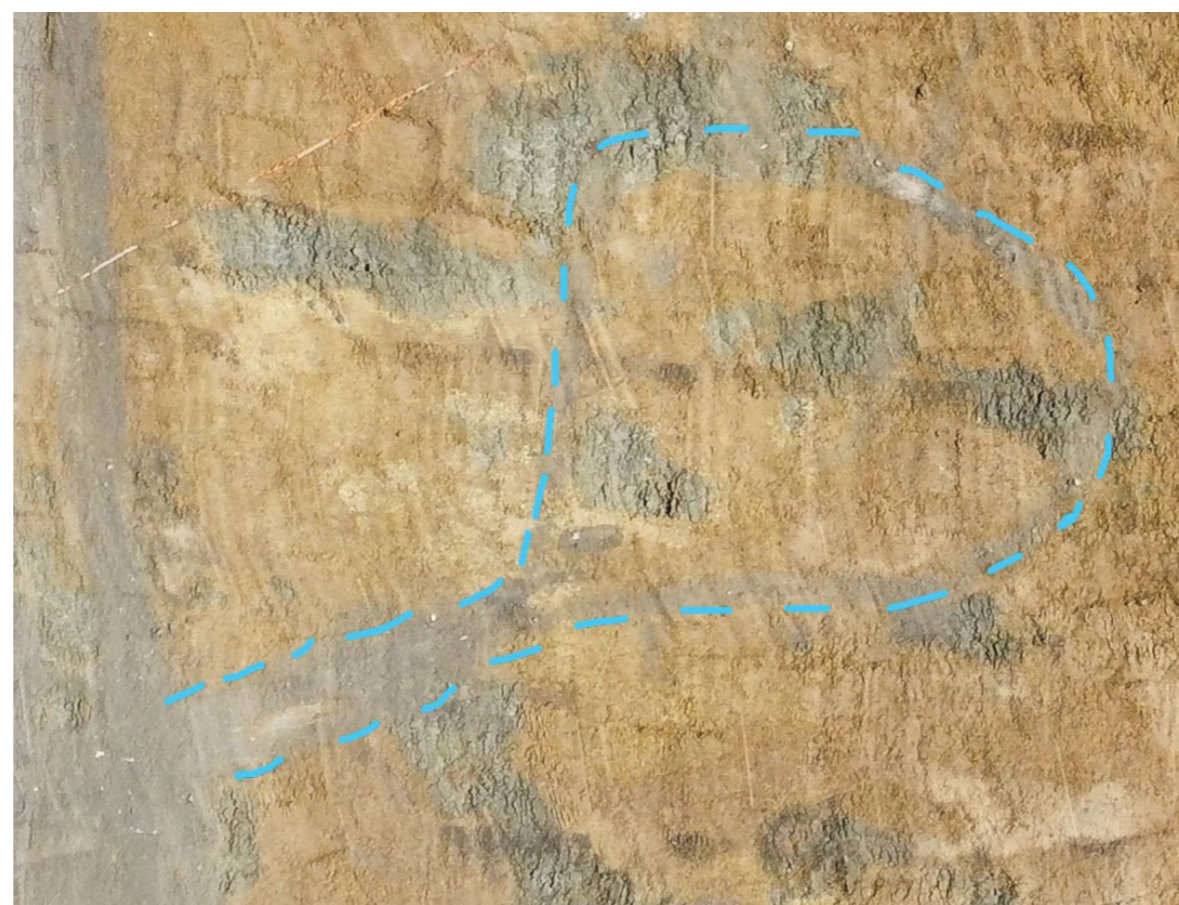
Excavations at Main Road, Dumbleton, Gloucestershire

The site revealed a range of features, but is particularly notable for the large number of linear features (ditches and gullies) which have been interpreted as field boundaries, stock enclosures and drainage features. A possible 'banjo enclosure has also been identified and is currently being investigated. At least one stone-built grain drier and one stone foundation, possibly a storage barn, have been recorded. In addition to this, at least one human burial was identified and a disturbed cremation may also be human, or it may belong with the two cattle burials also recorded.

Overall the site is indicative of a Late Iron Age/Early Roman Farmstead which appears to have existed for a least a few hundred years spanning the transition period of the prehistoric late Iron age to the Roman era.

## The Banjo Enclosure

On-site, the team are currently investigating a feature that may be a 'banjo' enclosure, so-called due to the general shape of a round or sub-circular enclosure with a funnel shaped entrance. Their function is not known although it is thought they relate, in part at least, to stock management with the funnel providing a way to corral the cattle.



Above:  
Aerial photo of banjo enclosure, marked in blue.

## The Grain Drier

Consisting of a stone built flue in a 'T' shape. This flue would have carried hot air from a fire in the stoke pit, heating up the now missing wooden floor level above, on which grain crops would have been spread out to remove moisture prior to their processing or storage.



Above:  
Photograph of corn drier.



Above:  
Fragments of Iron Age cooking pot

## The Finds

The vast majority of the finds retrieved from the site as a whole were either pottery sherds or animal bones. The highlights of the metal finds were three Roman coins and a bone-handled object. A lead weight and a piece of glass are the only other finds of note.

Right :  
Roman pottery jar rim and shoulders.



## The Burial

The remains of a single human burial has been uncovered on site. The remains were heavily damaged and missing a large number of bones, including the skull, due to the grave having been truncated to the north (left) by a later ditch.

The grave was orientated north-south and so is of pre-Christian date and is believed by the excavator to be of a middle-aged female. Further analysis of the remains will be able to confirm if the individual was male or female, their age and even potential health issues that the person suffered from.



Above:  
Photograph of the single burial to have been found onsite. Note the missing top half removed by the cutting of a large ditch.



Above:  
Possible Roman Barn.

## Possible Barn?

Consisting of a roughly square stone-built foundation structure some 4m by 4m with a possible drain or flue running through the centre. Could it be an animal barn or perhaps a drying barn working similarly to the corn drier.